

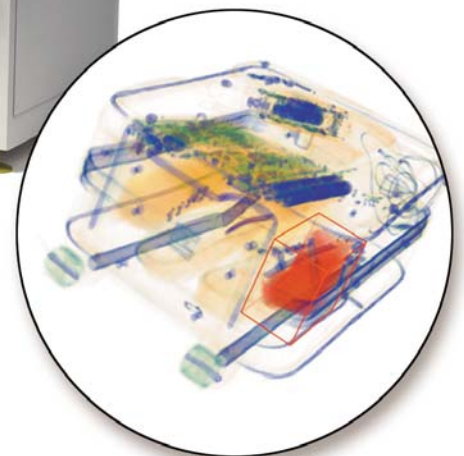
The eXaminer platform now delivers throughput at 750 bags per hour (BPH) with our Enhanced Speed (3DX-ES) model

The TSA-certified eXaminer 3DX-ES integrates the accuracy and dependability of L-3's flagship TSA-certified eXaminer 3DX into a new higher throughput in-line system that enables processing of up to 750 bags per hour. With the same footprint, proven operational performance and reliability as the eXaminer 3DX, the Enhanced Speed system is a low-risk and cost effective approach to higher-speed explosives detection for checked baggage screening.

Featuring industry-leading 3-D Continuous Flow CT Technology, the 3DX quickly and accurately scans entire bags and automatically assesses explosive threats. For alarmed bags, it generates complete 3-D views of each threat object and provides 3-D rotation tools to help operators make decisions regarding alarmed objects quickly and confidently.

Its small footprint makes the most of precious space, minimizing installation and site preparation costs. As with all of L-3's eXaminer configurations, the eXaminer 3DX-ES is designed for the ultimate in flexibility. The 3DX-ES can be configured at any time as part of a networked in-line system, and can be fitted with an optional meter-wide entrance tunnel. Flexible networking options link hold baggage systems of any configuration (SX, 3DX, XLB and MVT-HR) with their respective viewing systems and search workstations over a secure network. Workflow management features optimize staff utilization, enabling airports to realize the lowest possible staffing and operating costs.

More than 1,000 TSA-certified explosives detection systems are deployed worldwide. Existing eXaminer 3DX systems can be upgraded in the field to the 3DX-ES platform.



CONFIGURATIONS

- Fully Integrated



TECHNICAL SPECIFICATIONS :

GENERAL

Standard Tunnel Opening:
800 mm (31.5") W x up to 630 mm (24.8") H

Meter Wide Entry Tunnel Opening:
1006.4 mm (39.6") W x 600 mm (23.6") H

In-line Meter Wide Entry Tunnel:
1600 mm (63") L x 1159 mm (45.6") W x 1821mm (71.7") H

In-line Standard Entry/Exit Tunnel:
1600 mm (63") L x 914 mm (35.98") W x 1821 mm (71.7") H

Scanner Dimensions:
208 cm (82") L x 206 cm (81") W x 216 cm (85.2") H

Conveyor Belt Height: 927 mm (36.5")

Conveyor Speed: 20 cm/sec (8 in/sec)

Conveyor Capacity: 136 kg (300 lbs)

Bag Size: 780 mm (30.71") W x 2540 mm (100") L*
* Max Bag Length dependent on system configuration

Operational Throughput:
750 bags/hour (in-line)

Power Requirements:
208 VAC ±10%, 50-60Hz, 3Ø, 39.5 FLA or 480 VAC ±10%, 50-60Hz, 3Ø, 17.2 FLA (other acceptable sources: 380/400/415/440 VAC ±10%, 50-60Hz, 3Ø)

PHYSICAL SPECIFICATIONS - Weights

Scanner: Approx. 3,050 kg (6,700 lbs)

Meter Wide Entry Tunnel: Approx. 726kg (1,597 lbs)

Inline Entry/Exit Tunnel: Approx. 408kg (898 lbs)

X-RAY

X-ray Voltage: 165 kV, 10 mA

Duty Cycle: 100%

Cooling: Oil-filled

X-ray Sensor: Solid-state detectors, 3-D Continuous Flow helical computed tomography



Security & Detection Systems

Website: www.L-3com.com/sds
Email: inforequest.sds@L-3com.com
USA: Tel: +1.781.939.3800, Toll Free: 1.800.776.3031 (US only)
United Kingdom: Tel: +44 (0) 1344 477900
Asia: Tel: +65 6787 0118
Australia: Tel: +61 3 8645 4500
Middle East: Tel: +974 4 609 1906

IMAGING AND PERFORMANCE

Video Resolution:
1920 x 1280 high resolution, flat panel LCD monitor

Image Display:
2-D and 3-D images
3-D full bag scan in a single pass
Full 3-D bag/threat object views
3-D full image and threat object rotation

EDS FEATURES

Networking:
L-3 OptiNet™ with AT and/or CT
Field Data Reporting System (FDRS)

Image Archive:
Images stored for 48 hours

Diagnostics:
Built-in test capabilities
Enhanced data and service logs
Integrated service software test suite
Search Work Stations (SWS) to support trace/physical inspection with 3-D tools

ENVIRONMENTAL

Operating Temperature: 0°C to +40°C (32°F to +104°F)

Storage Temperature: -20°C to +60°C (-4°F to +140°F)

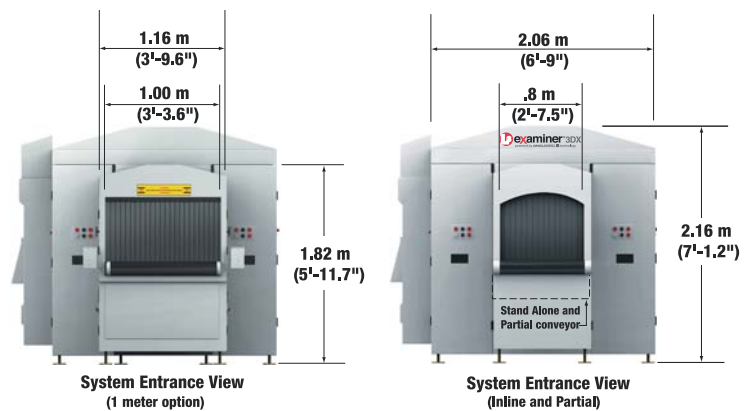
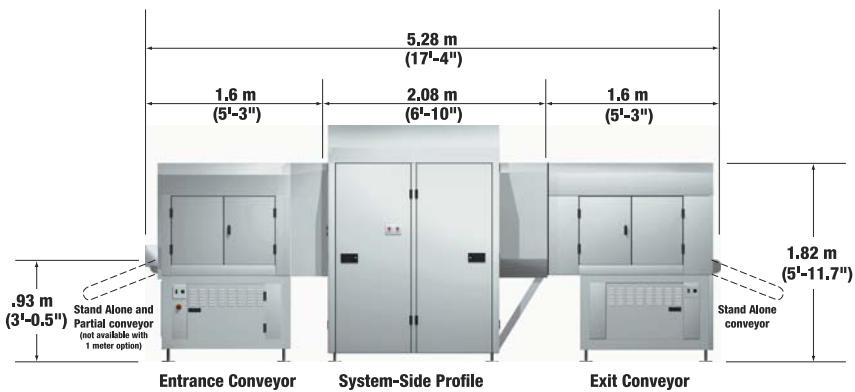
Relative Humidity: 85% non-condensing

RADIATION SAFETY

All L-3 Communication Security & Detection Systems' X-ray systems comply with all international standards for radiation safety requirements and external emissions limits including the United States Code of Federal Regulations, Title 21, Section 1020.40 (21 CFR1 020.40) that apply to our products.

OPERATIONAL STANDARDS

Complies with published international standards including the U.S. Federal Aviation Administration Standards, "Use of X-ray Systems" (Federal Standards 14 CFR108.17 and 14 CFR 129.26).



*System dimensions are rounded to the nearest decimal.

L-3 has made all reasonable efforts to ensure that the information in this document is accurate and complete, and disclaims any and all warranties for such accuracy and completeness, and is proprietary. This brochure consists of L-3 Communications Corporation general capabilities information that does not contain controlled technical data as defined within the Export Administration Regulations (EAR) Part 734.7-11.